



Kersfield Road, Putney, London

£3,250 Per month



Spanning the fifth and sixth floors, this striking penthouse apartment offers around 1,120 sq. ft. of beautifully designed living space, filled with natural light and enjoying far-reaching views across Putney and beyond.

On the lower floor, a generous double bedroom with floor-to-ceiling windows enjoys treeline views and benefits from a stylish en-suite bathroom.

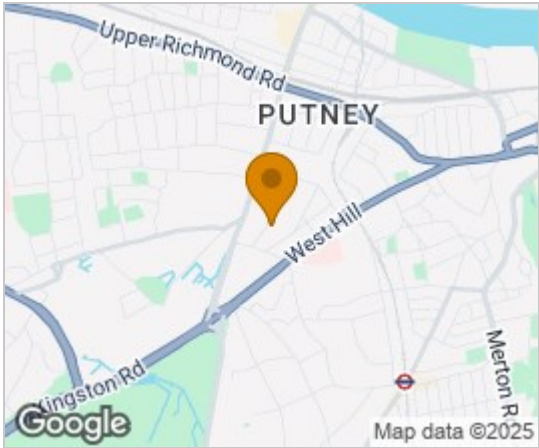
The upper floor is home to the impressive principal bedroom, complete with a contemporary en-suite and a walk-in dressing area fitted with bespoke Italian wardrobes. A separate glass-enclosed study sits alongside the staircase, creating a bright and functional workspace.

The highlight of this level is the spectacular open-plan living, kitchen and dining area. With soaring double-height ceilings where the staircase is located, full-height windows and a seamless connection to the wrap-around west-facing terrace (approx. 400 sq. ft.), the space is perfect for everyday living and entertaining. The kitchen comes fully equipped with the latest integrated appliances, while the dining and living areas offer panoramic sunsets over Putney and London.

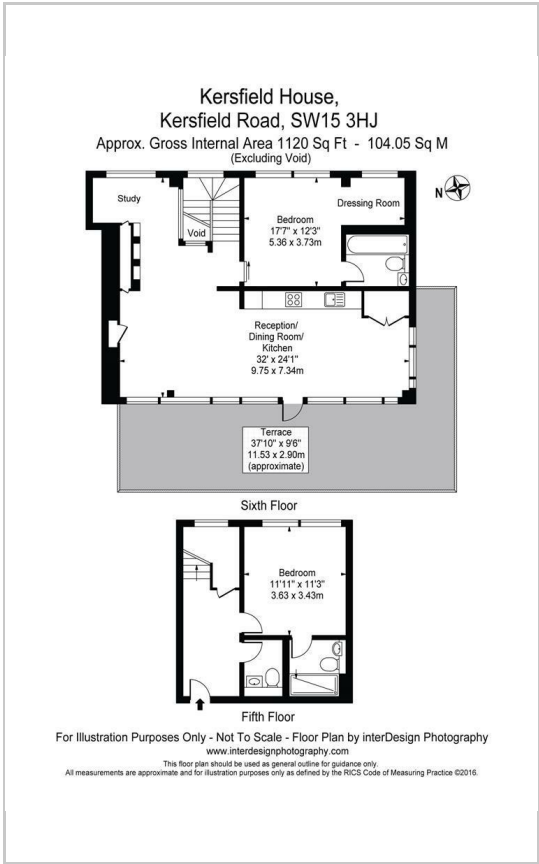
Additional features include a separate guest WC, extensive storage space, timber flooring throughout the upper level, plush pebble-toned carpet in the downstairs bedroom, private parking to the rear of the building. The property comes unfurnished and is ready to move into.



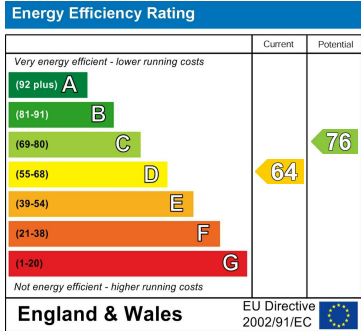
Area Map



Floor Plans



Energy Efficiency Graph



These particulars, whilst believed to be accurate are set out as a general outline only for guidance and do not constitute any part of an offer or contract. Intending purchasers should not rely on them as statements of representation of fact, but must satisfy themselves by inspection or otherwise as to their accuracy. No person in this firms employment has the authority to make or give any representation or warranty in respect of the property.